

LAFAYETTE GREENS map

URBAN GEOMETRY

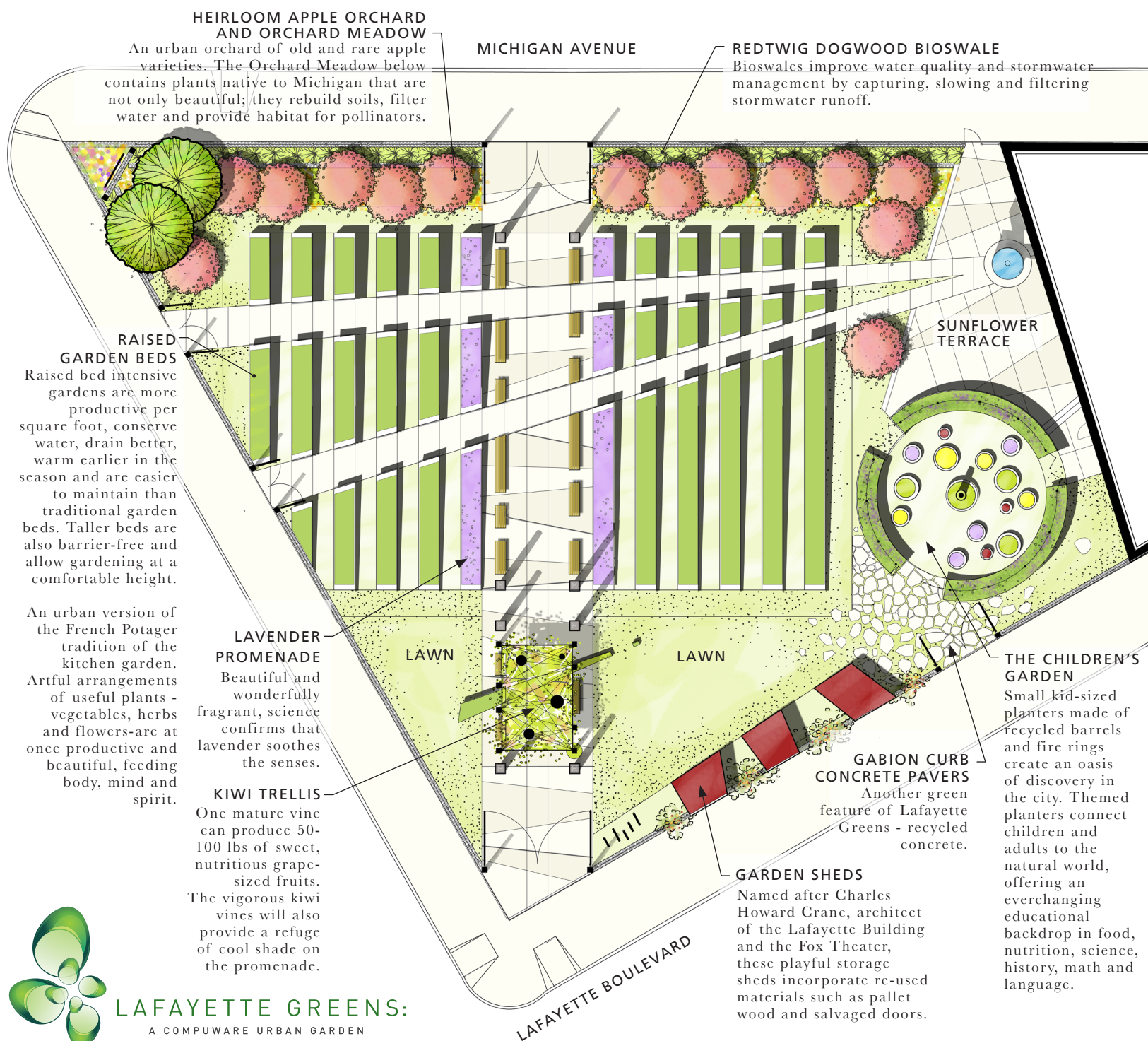
A play on formal landscape design and the rows of crops in Michigan's rich agricultural history, the garden brings a sense of ordered simplicity to a busy urban space through lines, circles and squares.

Symmetry and long linear raised vegetable beds provide a structure of elegance and order to this productive urban garden overflowing with vegetables, fruits and flowers.

The wide promenade, lined with lavender beds and benches, defines public space and passage through the garden serving a functional relationship between the garden and its urban location.

Lafayette Greens brings healthy food, green space and fun to downtown Detroit.

PRODUCTIVE BEAUTIFUL INSPIRING



HEIRLOOM APPLE ORCHARD AND ORCHARD MEADOW

An urban orchard of old and rare apple varieties. The Orchard Meadow below contains plants native to Michigan that are not only beautiful; they rebuild soils, filter water and provide habitat for pollinators.

MICHIGAN AVENUE

REDTWIG DOGWOOD BIOSWALE

Bioswales improve water quality and stormwater management by capturing, slowing and filtering stormwater runoff.

RAISED GARDEN BEDS

Raised bed intensive gardens are more productive per square foot, conserve water, drain better, warm earlier in the season and are easier to maintain than traditional garden beds. Taller beds are also barrier-free and allow gardening at a comfortable height.

An urban version of the French Potager tradition of the kitchen garden. Artful arrangements of useful plants - vegetables, herbs and flowers - are at once productive and beautiful, feeding body, mind and spirit.

LAVENDER PROMENADE

Beautiful and wonderfully fragrant, science confirms that lavender soothes the senses.

KIWI TRELLIS

One mature vine can produce 50-100 lbs of sweet, nutritious grape-sized fruits. The vigorous kiwi vines will also provide a refuge of cool shade on the promenade.

LAWN

LAWN

SUNFLOWER TERRACE

THE CHILDREN'S GARDEN

Small kid-sized planters made of recycled barrels and fire rings create an oasis of discovery in the city. Themed planters connect children and adults to the natural world, offering an everchanging educational backdrop in food, nutrition, science, history, math and language.

GABION CURB CONCRETE PAVERS

Another green feature of Lafayette Greens - recycled concrete.

GARDEN SHEDS

Named after Charles Howard Crane, architect of the Lafayette Building and the Fox Theater, these playful storage sheds incorporate re-used materials such as pallet wood and salvaged doors.

LAFAYETTE BOULEVARD



LAFAYETTE GREENS:

A COMPUWARE URBAN GARDEN

LAFAYETTE GREENS

A COMPUWARE URBAN GARDEN

public and participatory

Lafayette Greens brings healthy food, green space and an urban park together in a unique urban place. A great place to meet, relax, and stop in to see what's growing.

Master Gardeners add their talents to the garden, designing and tending special beds while the garden as a whole holds various opportunities for local artists to add to and participate in the garden experience.

Lafayette Greens is also a place where people can participate and interact by volunteering to garden, harvest, learn and teach. It's a place to experience the changing seasons, share food and growing techniques, and participate in the discussion about local food systems in Detroit and around the world.

productive

Intensive raised bed gardening is more productive than traditional garden beds, producing more produce per square foot by taking advantage of deep rich soil, intercropping, succession planting, good drainage, efficient water use and low maintenance needs. Lafayette Greens expands the conversation on how food, flower and herb production in the city can look and function.

The fresh organic produce grown at Lafayette Greens is grown and harvested by volunteers and donated to Gleaner's Community Food Bank.



LAFAYETTE GREENS:
A COMPUWARE URBAN GARDEN



green

Lafayette Greens is not only green space and fresh organic produce; the garden has several green features included in its design.

Urban biodiversity. A wide variety of plants; vegetables, herbs, flowers, fruit trees, and a native plant meadow bring biodiversity to the urban environment enriching habitat and experience.

Careful water use. Drought tolerant fescue lawn and efficient drip irrigation with raised bed growing conserves water.

Bioswale. Stormwater management with a native Redtwig Dogwood bioswale that captures, slows and helps to filter stormwater runoff. Pervious lawn and gravel surfaces reduce runoff and increase infiltration on the site.

Materials re-use. Concrete waste, pallet wood, salvaged doors, recycled steel and re-used steel drums are all part of the garden design.

educational

Lafayette Greens offers educational opportunities from learning how food grows, gardening methods, and nutrition to lessons in history, science and art. This urban garden space is a great place for workshops and sharing of knowledge.

The Children's Garden is filled with plants to discover, smell, touch and taste, fostering a sense of wonder and connection to the natural world.

inspiring

A new way to think about urban gardening. Growing food can be beautiful, healthy and inspiring, adding healthy green space, meaning and richness to city living. Lafayette Greens can show you how.

